



Total Library Staff : 60

Hours Open Per Week : 58


Monday-Thursday, 9 a.m. – 7 p.m.

Friday-Saturday, 9 a.m. – 6 p.m.

Closed Sunday


Collection Breakdown

books, audiobooks and DVDs




Adult

55,969




Young Adult

4,350




Children's

26,441



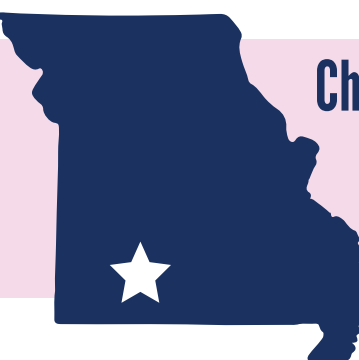
Special Collection

434



Digital Collection

2,048,865



Christian County, MO

94,422 total population

34,256 households

Based on 2023 census projections

25%
under 18
years old

17%
65 years
and older



Clever

7428 W. Veterans Blvd.
(417) 743-2277

Nixa

208 N. McCroskey St.
(417) 724-6100

Ozark

1005 N. 4th Ave.
(417) 581-2432

Sparta

147 Library Ln.
(417) 441-1400

Community Partner Pick-Up & Drop-Off Locations

1 Billings City Library

251 NE US Highway 60
Billings, MO

2 Double E Burger and Ice Cream Shoppe

339 Kentling Ave.
Highlandville, MO

christiancountylibrary.org/locations








2024 Annual Report






**Building community
for all through
access, innovation
and engagement.**

christiancountylibrary.org



23,074
active cardholders

4,115
new library cards

886,935
minutes logged on public computers

492,696 WiFi sessions at branch locations

140,131 database searches and downloads

390 mobile hotspots used for internet access



167,600+
library visitors

376,002
total circulation

250,842 physical materials

125,160 digital materials



31% of all households
have an active
library card



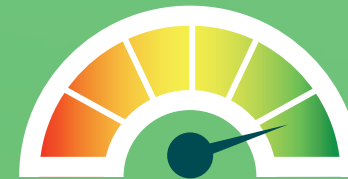
57% of New Card Holders
remain active 1 year later



Average Patron Value
\$900 a year

Based on average costs and usage

87 NPS[®]
Score



Survey sent weekly to measure patron satisfaction,
enthusiasm and loyalty. Dec. 2024

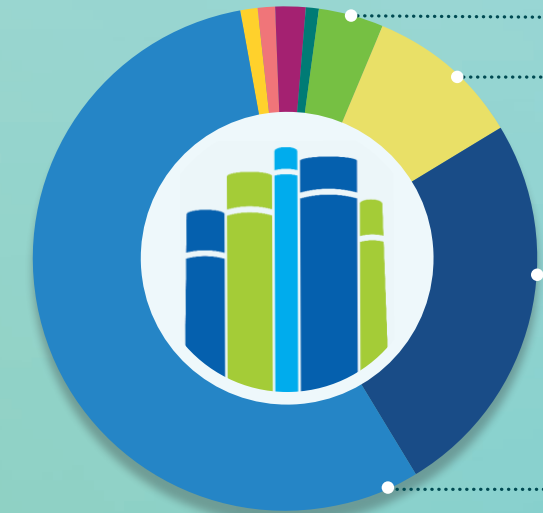
2024 Expenses

Wages & Benefits **\$2,135,000**

Facilities **\$1,025,000**

Print & Digital Materials **\$350,000**

Technology **\$150,000**



Professional Services **\$50,000**

Supplies **\$45,000**

Events & Communications **\$45,000**

Other **\$45,000**

3,353

items delivered
through home delivery

19,096

materials checked out to
assisted living facilities,
nursing homes and schools



1,090+
library events

18,600+
attendees

4,700+
meeting and study
room reservations

used by
33,500+
community members



\$9,430

from the
Library Foundation

\$7,016

from the
Friends of the Library

\$19,338

grants awarded

\$5,449

individual donations

